

# Bandwidth Management Module

Limit and allocate bandwidth reasonably to avoid network drain

## Module Description

Bandwidth Management module aims to limit and control bandwidth usage. With appropriate control at specified times, directions, network address and ports, bandwidth can be allocated to each computer specifically. The detailed traffic statistics help administrator trace abnormal activities. Real-time alerts are given in case any abnormal traffic is detected.

## Features

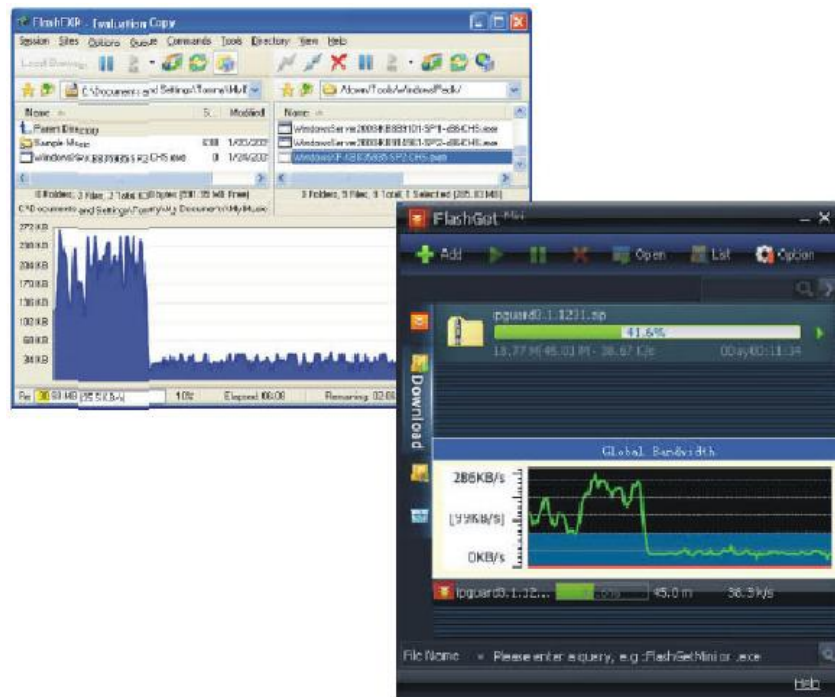
- Easy to adopt policy to control the bandwidth of every computer
- Real-time alerts are sent to administrator if any abnormal traffic is detected
- Detailed traffic statistics and complete analysis report

## Bandwidth Management Challenge

Nowadays, many enterprises set up high-speed Internet services in order to facilitate the whole workflow among different departments and business parties. But network drain, leading to a decrease in workflow efficiency, may be caused by improper uses of network resources, such as way of using Peer-to Peer and FTP download. How to limit and allocate the bandwidth to prevent network drain? Are there any mechanisms to allocate bandwidth fairly or specifically to each user? Are there any tools to provide real-time alerts for administrator when abnormal activities are detected?

## IP-guard Solution

The Bandwidth Management module aims to control bandwidth and gather statistics of traffic. With the collected traffic statistics and complete analysis report, system administrator can trace any abnormal traffic efficiently. Real-time alert is notified to administrators immediately if any abnormal traffic is detected. System administrators can adopt appropriate policies to deal with the problem instantly. During peak hours, administrator can easily assign fixed bandwidth to every use to ensure that every user has stable connection to the internal systems and the Internet.



IP-guard can limit the download speed.

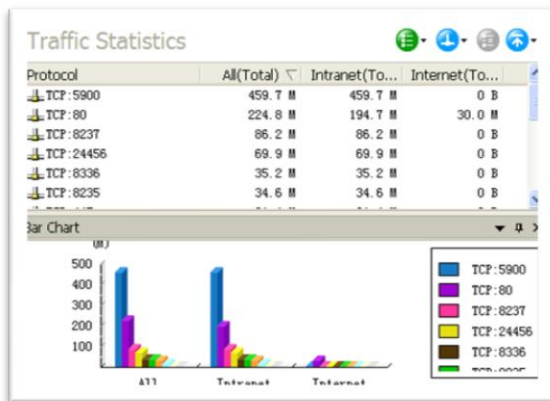
## Bandwidth Control

Bandwidth policy is used to limit the network bandwidth so as to avoid improper use causing network congestion. Also, the bandwidth can be controlled based on the specified network port.

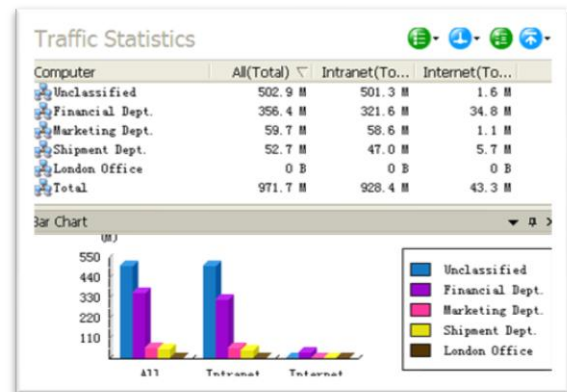
- Limit the download speed of agent computer
- Control the traffic network port or network address
- Allocate different bandwidth to different ports

## Traffic Statistics

The Network Traffic Statistics helps administrator to quickly trace network obstruction problems so that appropriate response measures can be taken to fix the problems. Traffic statistics includes network address of both sides of communications, ports and bandwidth. Such information provides administrators with an overview of the current network status.



Gather traffic statistics by port



Gather traffic statistics by department

## More Suggestions

Combining with the use of Network Management function, IP-guard not only can enhance the internal security level, but also can prevent illegal computers from accessing internal protected servers with its intrusion detection and blocking functions. For details, please refer to Network Management module.

## Available Modules for Your Selection

- Application Management
- **Bandwidth Management**
- Basic Management
- Device Management
- Document Management
- Email Management
- IM Management
- IT Asset Management
- Network Management
- Print Management
- Remote Maintenance
- Removable Storage Management
- Screen Monitoring
- Website Management